



LEVELS



STORAGE



SAWS

CLAMPS



KNIVES

TAPES



HAMMERS

SCREWDRIVERS



STAPLING



STANLEY
FATMAX

DEWALT®

GUARANTEED TOUGH.®

XR FLEX VOLT

POWER OF CORDED
FREEDOM OF CORDLESS



130 YEARS OF LEADING THE WAY



**SOCKETS &
ACCESSORIES**



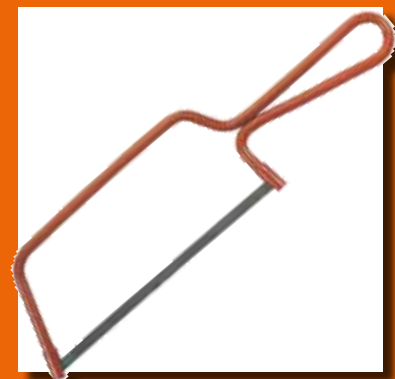
**ADJUSTABLE
WRENCHES**



SCREWDRIVERS



PLIERS



HACKSAWS



LINDSTROM PLIERS



FILES



HOLESAWS

IN PROFESSIONALS' HANDS SINCE 1886

Technically advanced products with industry needs at the core.

- Trusted Superior Performance.
- Problems Solving.
- High Quality.
- Technical Innovation.
- Excellent Technical and After-Sales Support



TOUGH PROTECTION FOR TOUGH JOBS



- SKIN CLEANSERS ● SURFACE CLEANING & MAINTENANCE ●
- DISPENSERS & ACCESSORIES ●

Swarfega®



TOOL KITS & TOOL STORAGE



STAINLESS STEEL SOCKETRY



SOCKET SETS & ACCESSORIES



SPANNERS & WRENCHES



SCREWDRIVERS & BITS



INSULATED TOOLS



SERVICE TOOLS

EVERLASTING POWER GUARANTEE

GET ORGANISED™



METRIC / IMPERIAL CONVERSION CHART

Length (mm)	Length (Inch)
12	1/2"
16	5/8"
20	3/4"
25	1"
30	1.1/4"
40	1.1/2"
45	1.3/4"
50	2"
60	2.3/8"
70	2.3/4"
75	3"
80	3.1/4"
90	3.1/2"
100	4"
110	4.3/8"
120	4.3/4"
125	5"
150	6"



Starrett®

Manufacturing Quality Hole Saws Since 1978

Padlocks

For every application



Security Tech Germany



DORMER



HOLEMAKING TOOLS

MILLING TOOLS

THREADING TOOLS

TURNING TOOLS

BORING TOOLS

CARBIDE BURRS

REAMERS & COUNTERSINKS

CUTTING

LUBRICANTS



METRIC / IMPERIAL CONVERSION CHART

Screw Size (Imp)	Clearance Drill (mm)	Pilot Drill (mm)	Clearance Drill (Imp)	Pilot Drill (Imp)
4	2.8mm	1.6mm	7/64	1/16
6	3.6mm	2.0mm	9/64	5/64
8	4.5mm	2.4mm	11/64	3/32
10	5.0mm	2.8mm	3/16	7/64
12	5.5mm	3.2mm	7/32	1/8
14	6.5mm	3.6mm	1/4	9/64
16	7.0mm	4.0mm	17/64	5/32
18	7.5mm	5.0mm	19/64	3/16
20	8.5mm	5.5mm	21/64	13/64
24	9.0mm	5.5mm	3/8	7/32





Nothing but **HEAVY DUTY.**™



TOOLS





Storage



Wrenches



Ratchets - Sockets



Screwdrivers - Keys
and bits



Torque Control



Power Tools



Pliers



Measuring - Scribing



Hammer - Chisels - Punch



Sawing - Cutting



Lighting



Pipework -
Maintenance - Pullers



Electricity - Electronics



Automotive Tooling

FAITHFULL®

QUALITY TOOLS

We are a long established British company with an excellent reputation for service and reliability. Through constant re-investment and development, our organisation now includes multiple Regional Branches and Central Distribution Centres, which between them provide a specialist tool distribution service to the whole of the United Kingdom, Ireland and beyond.

Our success has been built on Customer Focus, Innovation, Leadership, Integrity and People.

We remain a privately owned company, who constantly reinvest in products, services and initiatives. We aim to be alert to our customer's requirements, through our team of national and local field based representatives, who are experienced and knowledgeable about our products and services.

We exclusively source, stock and distribute Faithfull Tools, Scan and Lighthouse Brands which must be manufactured to a high standard aiming to give long lasting and dependable service.

The Faithfull Tools team are dedicated to the development of the range. All the sourcing, ordering, marketing, promoting, artwork development, importing, quality checks and of course selling are handled by this team.

We have a customer base of over 13,000 outlets which includes many of the UK and Republic of Ireland's key National Builder Merchants, Engineer Merchant Groups, Online Retailers, Hardware Outlets and Garden Centres.

Our excellent credit rating has been established from solid trading practices, providing security for our Staff, Customers and Suppliers.

We are proud of our achievements so far. We are also proud of our strong trading relationships with our suppliers in the UK, Europe and Asia. We are now looking to build a long term relationship with you, through the development of our Faithfull Brand.

Further details of our products can be found on our website

www.faithfulltools.com

Abrasives



Automotive



Brushes and Brooms



Building



Chains and Storage



Construction



Cutting Blades and Discs



Decorating



Drilling



Electrical



Engineering



Gardening



Hammers



Screwdrivers



Plumbing



Woodworking



Tapes and Measures



MaxiDry®



Reference	56-425
Coating	3/4 dipped
EN 388	4121
EN 374	no
Sizes	6-11



OILY Environment
Precision Handling

Where to use:

MaxiDry® is designed for use in oily or wet environments. i.e. primary assembly, building and construction, maintenance, assembly and engineering.

MaxiDry®

ZERO™



Reference	56-451
Coating	Fully
EN 388	4232
EN 511	111
Sizes	7-11



Food Certified



COLD Environment
Precision Handling

Where to use:

MaxiDry® Zero™ is designed for use in dry or wet environments requiring thermal resistance. i.e. cold store, agriculture, construction and logistics.

MaxiCut®

OIL™



Reference	34-305
Coating	3/4 dipped
EN 388	4331
Sizes	7-11

CUT LEVEL 3
according to EN 388:2003



OILY Environment
Precision Handling

Where to use:

MaxiCut® Oil™ is designed for use in oily or wet environments with an increased risk of cut. i.e. sheet metal, handling broken glass, primary assembly, maintenance, fabrication, press shops and heavy engineering.

MaxiCut®

OIL™



Reference	34-505
Coating	3/4 dipped
EN 388	4542
Sizes	6-11

CUT LEVEL 5
according to EN 388:2003



OILY Environment
Precision Handling

Where to use:

MaxiCut® Oil™ is designed for use in oily or wet environments with an increased risk of cut. i.e. sheet metal, handling broken glass, primary assembly, maintenance, fabrication, press shops and heavy engineering.

MaxiDry®

ZERO™

THERMtech™
thermal lined

LIQUItech™
waterproof

GRIPtech™
superior grip



guaranteed
skin friendly



EC 1935/2004 (LFBG)
Food certified according to
the European Standard
Compliant to FDA 21CFR177

Waterproof, Cold Temperature
Glove (as low as -30°C)

- Retains flexibility and will not stiffen or crack at low temperatures
- Warm fleece liner wicks perspiration away from the skin
- Available from sizes 7 – 11



MaxiFlex[®] ULTIMATE™



Reference	42-874
Coating	palm
EN 388	4131
Sizes	5-12



DRY Environment
Precision Handling

Where to use:

MaxiFlex[®] Ultimate™ has become the benchmark for precision handling in dry environments. i.e. assembly, automotive, aerospace, construction, logistics and general handling.

MaxiFlex[®] ELITE™



Reference	34-274
Coating	palm
EN 388	4121
Sizes	6-11



DRY Environment
Precision Handling

Where to use:

MaxiFlex[®] Elite™ is designed for use in dry environments requiring precision handling. i.e. assembling small parts, final assembly, maintenance etc.

MaxiFlex[®] CUT™



Reference	34-8743
Coating	palm
EN 388	4331
Sizes	6-12



DRY Environment
Precision Handling

Where to use:

MaxiFlex[®] Cut™ is designed for use in dry environments requiring precision handling with an increased risk of cut. i.e. sheet metal handling, primary, secondary and final assembly, maintenance, automotive, aerospace, construction and fabrication.

MaxiCut[®] ULTRA™



Reference	44-3745
Coating	palm
EN 388	4542
Sizes	6-11



DRY Environment
Precision Handling

Where to use:

MaxiCut[®] Ultra™ is designed for use in dry environments with an increased risk of cut. i.e. sheet metal, broken glass handling, primary, secondary and final assembly, maintenance, automotive, aerospace and construction.

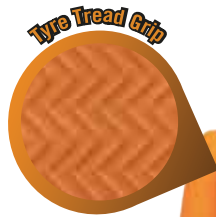
KEEPING HOT HANDS COOL,
DRY and PRODUCTIVE

MaxiFlex[®] ULTIMATE™



ORANGE GRIPPER®

NITRILE TYRE TREAD DISPOSABLE GLOVES



- TYRE TREAD GRIP
- CHEMICAL RESISTANT
- POWDER FREE
- EXTRA THICK 0.18mm
- NITRILE DISPOSABLE
- AQL 1.5
- FOOD APPROVED



CODE	DESCRIPTION	SIZE	BOX QTY.
7181-08	ORANGE GRIP NITRILE GLOVE MED 1=BOX/100	8	100
7181-09	ORANGE GRIP NITRILE GLOVE LGE 1=BOX/100	9	100
7181-10	ORANGE GRIP NITRILE GLOVE XL 1=BOX/100	10	100
7181-11	ORANGE GRIP NITRILE GLOVE 2XL 1=BOX/90	11	90

Exclusively available from Keypoint Industrial Solutions Ltd.
www.keypoint-uk.co.uk

THE MOST PROFESSIONAL SOLUTION
FOR HEATING A MECHANICAL PIECE



Fast Therm Induction Heaters



With You

Experts
& Tools



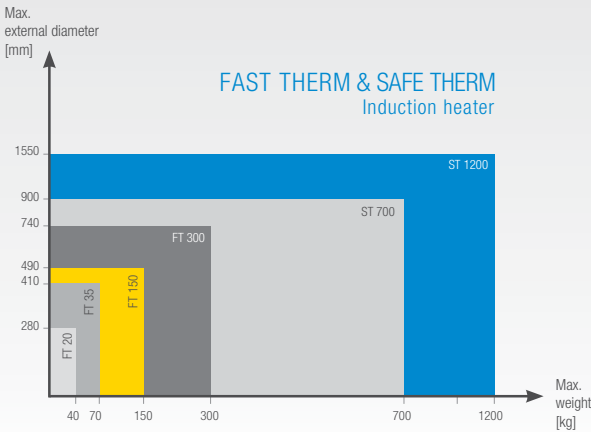
EXPERTS & TOOLS SUPPLIES DIFFERENT INDUCTION HEATERS
FOR YOUR PARTICULAR REQUIREMENTS.

	FAST THERM 20	FAST THERM 35	FAST THERM 150	FAST THERM 300	SAFE THERM 700	SAFE THERM 1200
Max. bearing weight (kg)	40	70	150	300	700	1200
Minimum bore (mm)	10	15	30	30	45	85
Max. external diameter (mm)	280	410	490	740	900	1550
Max. power consumption (KVA)	3.6	3.6	12.8	12.8	25	40
Max. voltages/current*	230V/16A	230V/16A	400V/32A	400V/32A	400V/63A	400V/100A
Temperature range	+40°C to 240°C	+40°C to 240°C	+40°C to 240°C	+40°C to 240°C	+40°C to 240°C	+40°C to 240°C
Including	• 3 magnetic field-guiding bars • Carrying case	• Swivel-mounted bar	• Swivel-mounted bar	• Mobile trolley • Swivel-mounted bar	• Infrared remote control	• Infrared remote control

* Other voltages on request.

TOOLS

SELECTION GUIDE FOR HEATERS



ACCESSORIES

Experts & Tools supplies additional equipment such as support ledges (yokes), extensions, hoists, temperature probes, gloves and much more. Details in our maintenance tool catalogue.



PULLERS

Bearing Removal Made Easy



With You

PULLER KIT FOR DEEP-GROOVE BALL BEARINGS



APPLICATION

Tool to extract deep groove ball bearings of 10-100mm bore from blind housings.

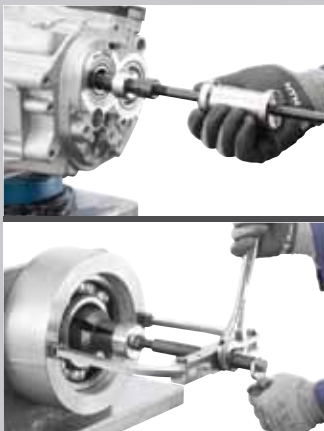
ADVANTAGES

Enables easy removal

Part Number:
TOOL BBPS 10-100 / Ball Bearing Puller Set



PULLER KITS FOR THE INTERNAL GRIPPING OF THE BORE OF A BEARING



APPLICATION

Tool to extract tightly fitted bearings from housings by pulling on the internal diameter.
Range from 5-100mm

ADVANTAGES

Comprehensive range of Pullers adjustable to suit your application.
Two sets (5-44mm) and (45-100mm)

Part Number:
TOOL BP Set 5-44 / Bore Puller Set
TOOL BP Set 45-100 / Bore Puller Set



SELF-CENTRING HYDRAULIC PULLERS 2/3 ARMS SELF-CENTRING HYDRAULIC PULLERS



APPLICATION

Tools to enable the extraction of large bearings and other components with an interference fit such as pulleys and gears.
Maximum outside diameters ranging from 325 to 680mm.

ADVANTAGES

Sturdy, compact self-centring pullers with hydraulic assistance to enable dismantling with minimum effort.
Convertible from 3 leg to 2 leg.

Part Number:
TOOL SCHP 4TONS / Self-Center hyd Puller
> also available in: 12.20 and 30 TONS



Experts & Tools

At your service
for more
performance

Experienced and well equipped Bearing Experts at your side to scale new heights.

Our custom-made offer:

- tools and products to maintain your bearings
- theoretical and practical training on bearings and their maintenance
- technical assistance in mounting and extracting bearings
- renovation of bearings and machine tool spindles.
- expertise in damaged bearings and lubrication
- vibration analysis of rotating machinery
- rental of special tools
- maintenance audit of your organisation

Find Experts & Tools on our site at www.ntn-snr.com/services
And through expertsandtools@ntn-snr.com

DOC-LETAP1.GBa - Conception et réalisation Services publicités NTN-SNR - © SNR 2013 - Credits Photos : © Pedro studio photo - © Shutterstock

www.ntn-snr.com



With You

